

FOR LEASE

2060 Broadway, Boulder

PRIME OFFICE SUITES AVAILABLE



SIENA SQUARE

Premiere Downtown Boulder Location

Located 1/2 Block from the Pearl Street Mall at the Corner of Broadway and Spruce

Siena Square, located at 2060 Broadway, offers unsurpassed views of the Flatirons and is merely a 1/2-block from the Historic Pearl Street Mall. Siena Square is ideally located on Broadway offering users amazing visibility, easy accessibility, and is a 1/2 block from a city parking garage providing excellent foot traffic and easy parking.

EXCLUSIVELY
REPRESENTED BY

Geoffrey E. Keys
Russell A. Lee
Ronan B. Truesdale

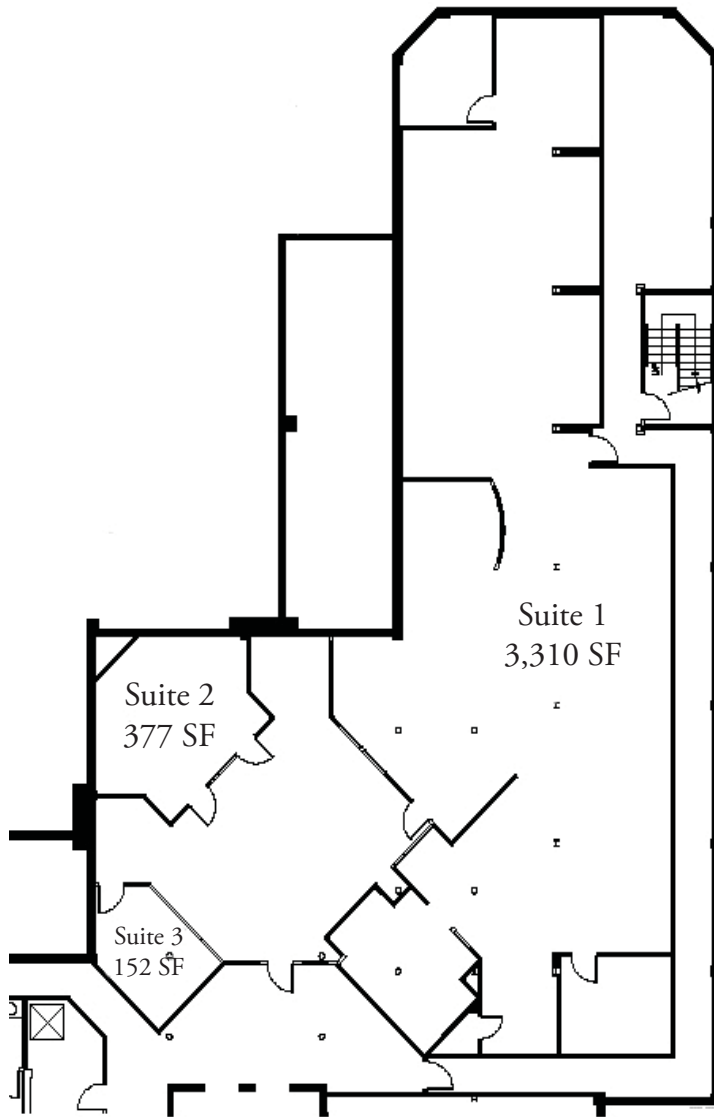
303.447.2700

1919 Fourteenth Street, Suite 800 | Boulder, CO 80302
303.447.2700 | www.keys-commercial.com

Keys Commercial

OFFICE SPACE FOR LEASE

HISTORIC DOWNTOWN BOULDER LOCATION



AVAILABLE OFFICE SUITES:

- Basement Suite 1 - 3,310 Square Feet
- Basement Suite 2 - 377 Square Feet
- Basement Suite 3 - 152 Square Feet
- Suite 210 - 606 Square Feet
- Suite 225 - 4,374 Square Feet
- Suite 360 - 752 Square Feet

Lease Term: 3 - 5 years

Lease Rate: \$16.00 - \$17.00 NNN

Basement Office: \$0.00 NNN

EXCLUSIVELY
REPRESENTED BY

Geoffrey E. Keys
Russell A. Lee
Ronan B. Truesdale

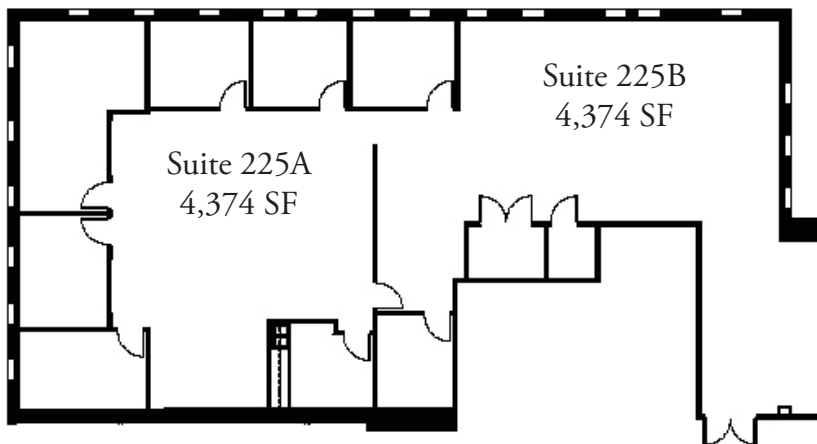
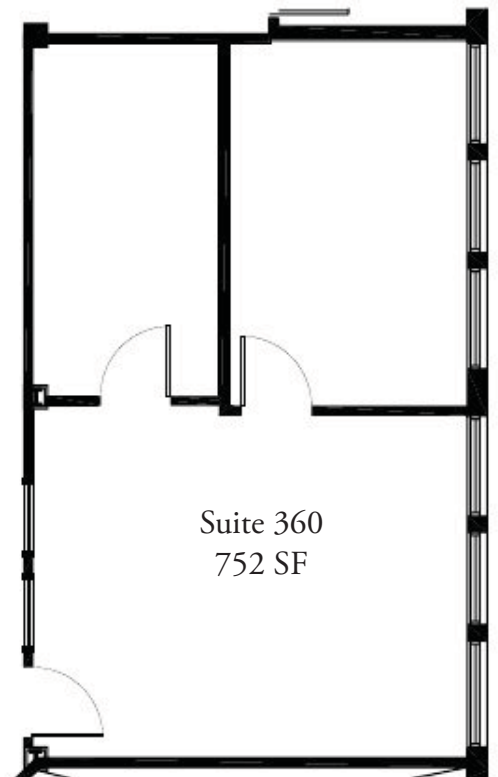
303.447.2700

1919 Fourteenth Street, Suite 800 | Boulder, CO 80302
303.447.2700 | www.keys-commercial.com

Keys Commercial

OFFICE SPACE FOR LEASE

ONLY 1/2 BLOCK FROM PEARL STREET MALL



EXCLUSIVELY
REPRESENTED BY

Geoffrey E. Keys
Russell A. Lee
Ronan B. Truesdale

303.447.2700

1919 Fourteenth Street, Suite 800 | Boulder, CO 80302
303.447.2700 | www.keys-commercial.com

Keys Commercial