

5395 Pearl Parkway, Boulder

OFFICE/ R&D BUILDING

5395 Pearl Parkway

Located near the intersection of 55th and Pearl Street in Boulder, Colorado, this building offers users a central location with convenient access to Foothills Parkway.

Suites range in size from 8,000 to 40,000 rentable square feet.

Amenities include private entrances, dock doors, and direct access to the Boulder Creek bike path.

Furniture package potentially available to users. The property is locally owned and managed.

The site offers amazing views with abundant free parking.

Rates: \$12.50 - \$14.50 NNN

Tenant Improvements: Negotiable

Term: Negotiable



**EXCLUSIVELY
REPRESENTED BY**

Ronan B. Truesdale
Geoffrey E. Keys

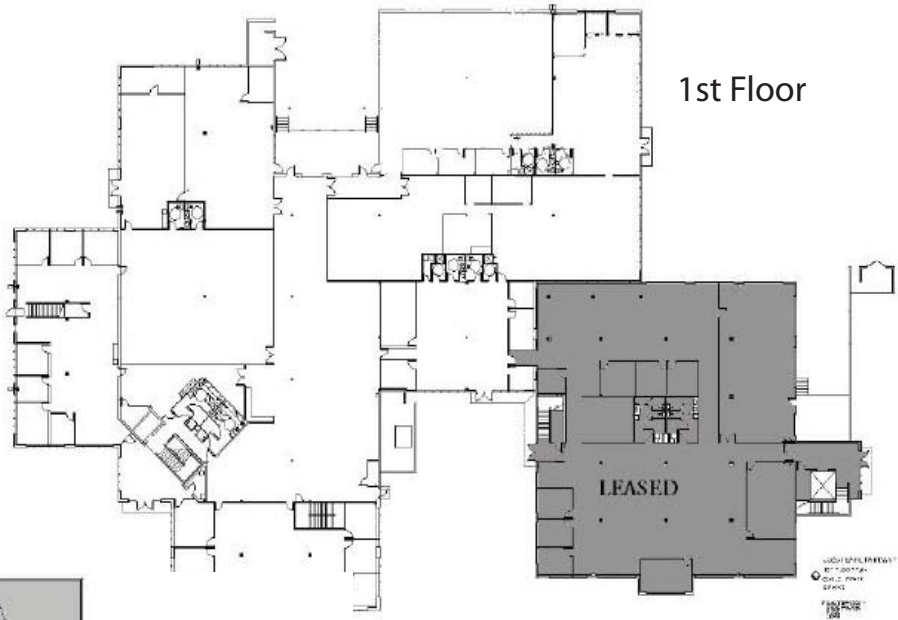
303.447.2700

1919 Fourteenth Street, Suite 800 | Boulder, CO 80302
303.447.2700 | www.keys-commercial.com

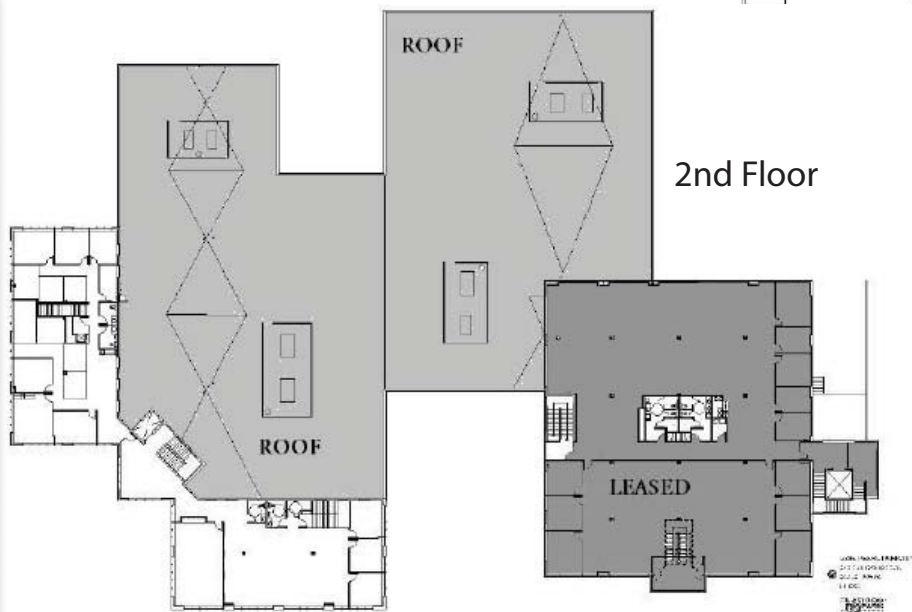
Keys Commercial

For Lease

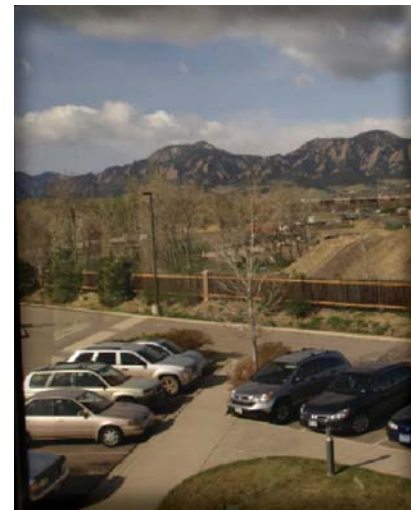
BOULDER OFFICE/R&D



1st Floor



2nd Floor



**EXCLUSIVELY
REPRESENTED BY**

Ronan B. Truesdale
Geoffrey E. Keys

303.447.2700

1919 Fourteenth Street, Suite 800 | Boulder, CO 80302
303.447.2700 | www.keys-commercial.com

Keys Commercial

Keys Commercial obtained the information above from sources we believe to be reliable. However, we have not verified its accuracy and make no guarantee, warranty or representation about it. It is submitted subject to the possibility of errors, omissions, change of price, rental or other conditions, prior sale, lease or financing, or withdrawal without notice. You and your tax and legal advisors should conduct your own investigation of the property and transaction. All marks displayed on this document are the property of their respective owners.