

FOR SUBLEASE

5340 Airport Road, Boulder

OFFICE SPACE FOR SUBLEASE



AVAILABLE SPACE: 28,779 Square Feet

AVAILABILITY: Immediate

LEASE RATE: \$13.00 NNN

OPERATING EXPENSES: Approx. \$5.02 + Utilities + Janitorial

HIGHLIGHTS: Unique 2-story, stand alone Corporate Headquarters building. Building exhibits a striking reception area, several dry "labs", a good mix of open area and private offices, several conference rooms, a training room, cafeteria and shipping area with two overhead doors.

This single tenant office building has Flatirons views, proximity to the bike path and is conveniently located near the Diagonal Highway and Highway 36/Northwest Corridor.



EXCLUSIVELY
REPRESENTED BY

Russell A. Lee
Ronan B. Truesdale
Ashley C. Overton

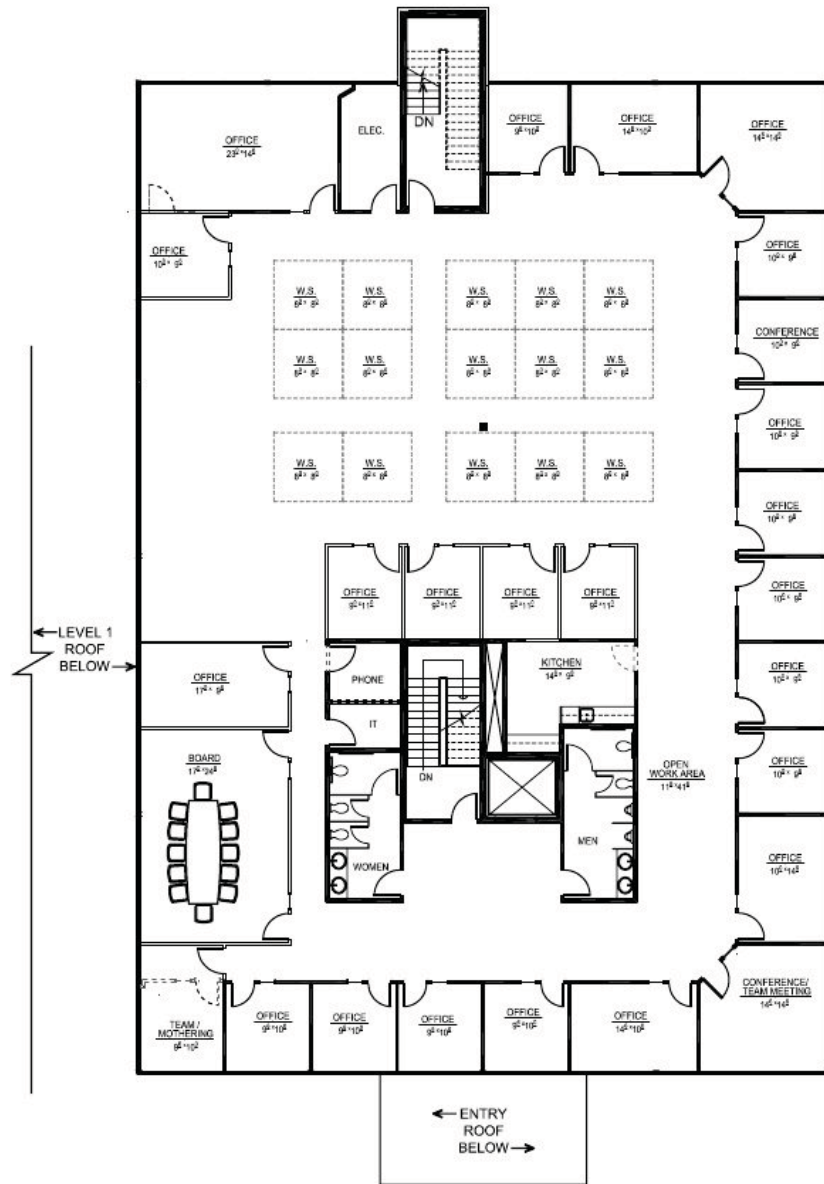
303.447.2700

1919 Fourteenth Street, Suite 800 | Boulder, CO 80302
303.447.2700 | www.keys-commercial.com

Keys Commercial

FOR SUBLEASE

2nd Floor



EXCLUSIVELY
REPRESENTED BY

Russell A. Lee
Ronan B. Truesdale
Ashley C. Overton

303.447.2700

1919 Fourteenth Street, Suite 800 | Boulder, CO 80302
303.447.2700 | www.keys-commercial.com

Keys Commercial