

FOR LEASE

2900 Center Green Court, Boulder

OFFICE SPACE IN CENTRAL BOULDER

2900 CENTER GREEN COURT.
BOULDER, COLORADO

Located near the intersection of Valmont Road and Foothills Parkway in Boulder, Colorado, this building offers users a central location with convenient access to US-36, Highway 119 (to Longmont), and Downtown Boulder.

This property's great location also offers high roadside visibility from Foothills Parkway and close proximity to restaurants, shopping and entertainment at 29th Street Mall.

Approximately 18,862 RSF.

Lease Rate: \$12/SF NNN (\$6.13)



EXCLUSIVELY
REPRESENTED BY

Geoffrey E. Keys
Russell A. Lee

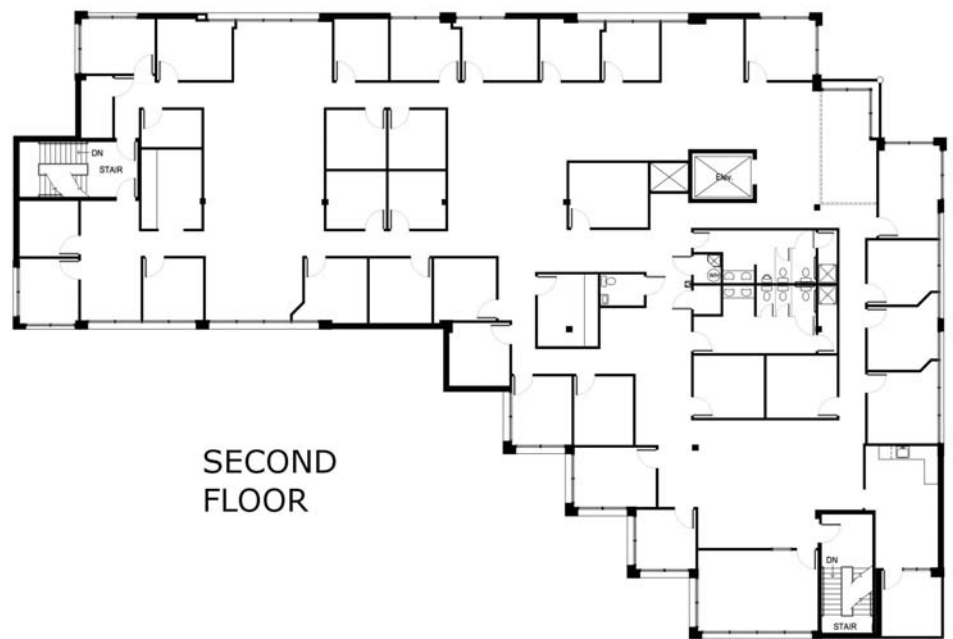
303.447.2700

1919 Fourteenth Street, Suite 800 | Boulder, CO 80302
303.447.2700 | www.keys-commercial.com

Keys Commercial

FOR LEASE

EXCELLENT LOCATION & VISIBILITY



EXCLUSIVELY
REPRESENTED BY

Geoffrey E. Keys
Russell A. Lee

303.447.2700

1919 Fourteenth Street, Suite 800 | Boulder, CO 80302
303.447.2700 | www.keys-commercial.com

Keys Commercial