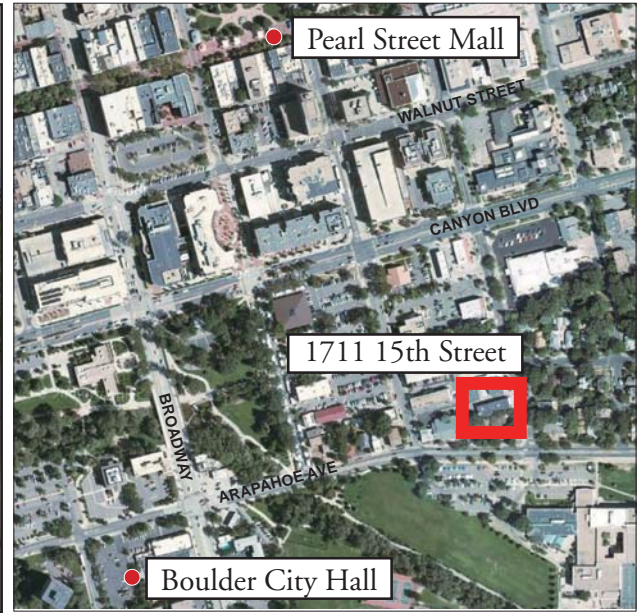


FOR LEASE

1711 15th Street, BOULDER

OFFICE SPACE AVAILABLE

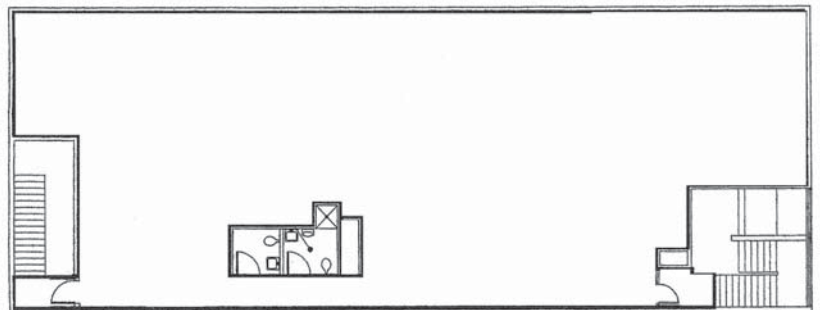


DOWNTOWN BOULDER

FEATURES:

Located at 15th Street & Arapahoe Avenue in Downtown Boulder, 1711 15th Street boasts a Great Downtown Boulder Office Lease Rate and Onsite Parking; Close Proximity to the RTD Bus Station, The Boulder Bike Path, Central Park, City of Boulder Municipal Building (City Hall), the Boulder Justice Center and the University of Colorado. Suite 200 has abundant windowline, shower and is available in its entirety or may be demised.

PREMISES:	Suite 200
SIZE:	3,590 SF (Divisible)
OCCUPANCY:	Immediately
LEASE RATE:	\$10.00 - \$12.00 NNN
EXPENSES:	\$7.50/SF (plus utilities)
PARKING:	Five Spaces
SIGNAGE:	Available



EXCLUSIVELY
REPRESENTED BY

Ashley C. Overton
Geoffrey E. Keys

(303) 447 - 2700

1919 Fourteenth Street, Suite 800 | Boulder, CO 80302
303.447.2700 | www.keys-commercial.com

Keys Commercial